

The Catchment Based Approach (CaBA): Getting the Best from the Water Environment

Chris Ryder
Programme Executive
CaBA National Support Group

www.catchmentbasedapproach.org

Ben Lamb
Trust Manager
Tees Rivers Trust

www.teesriverstrust.org

SAGB Conference
Fishmongers' Hall
24-25 May 2016



Structure of Presentation

- ❑ CaBA: a Government funded approach for delivering improvements to water bodies in ways that maximise social and economic benefits
- ❑ Third sector organisations are funded to build Catchment Partnerships covering all of England
- ❑ Making significant progress in fluvial parts of catchments
- ❑ Still a challenge to extend “CaBA effect” to coastal waters
- ❑ But we are working on it and the shellfish sector can benefit, we would value your participation



What CaBA does

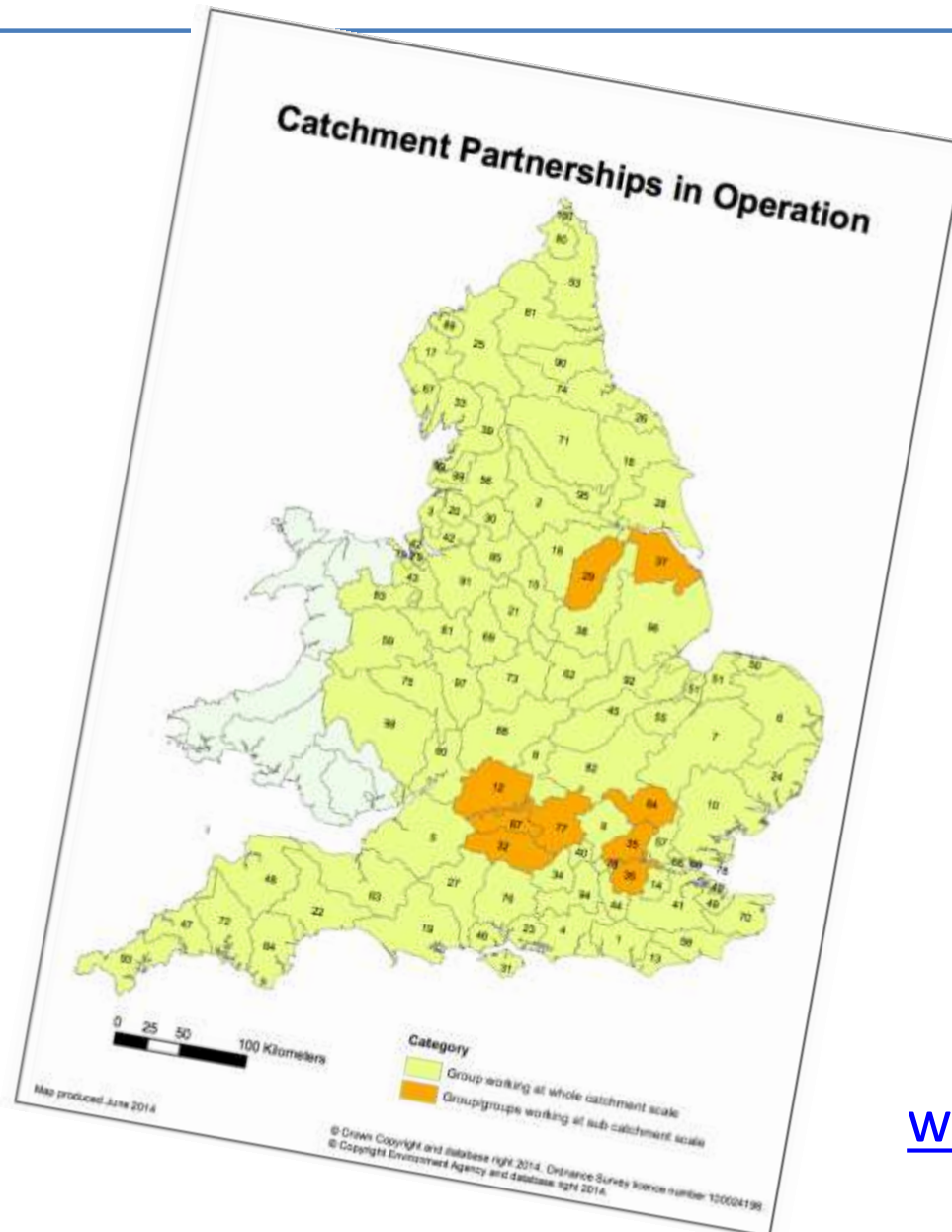


- Aims for healthy and fully functioning ecosystems throughout catchment
- Secures active involvement of community and all interested parties
- Expands evidence base and places at heart of discussion
- Builds consensus on measures needed and benefits desired
- Pursues multiple benefits (flood protection, biodiversity etc)
- Levers funding from a range of sources (e.g EU, Heritage Lottery Fund, businesses, beneficiaries)
- Right measures in right place
- Bottom up approach but links into wider plans
- Catchment hosts are the honest brokers that link and drive all this

Integrated catchment management



Catchment Based Approach (CaBA)

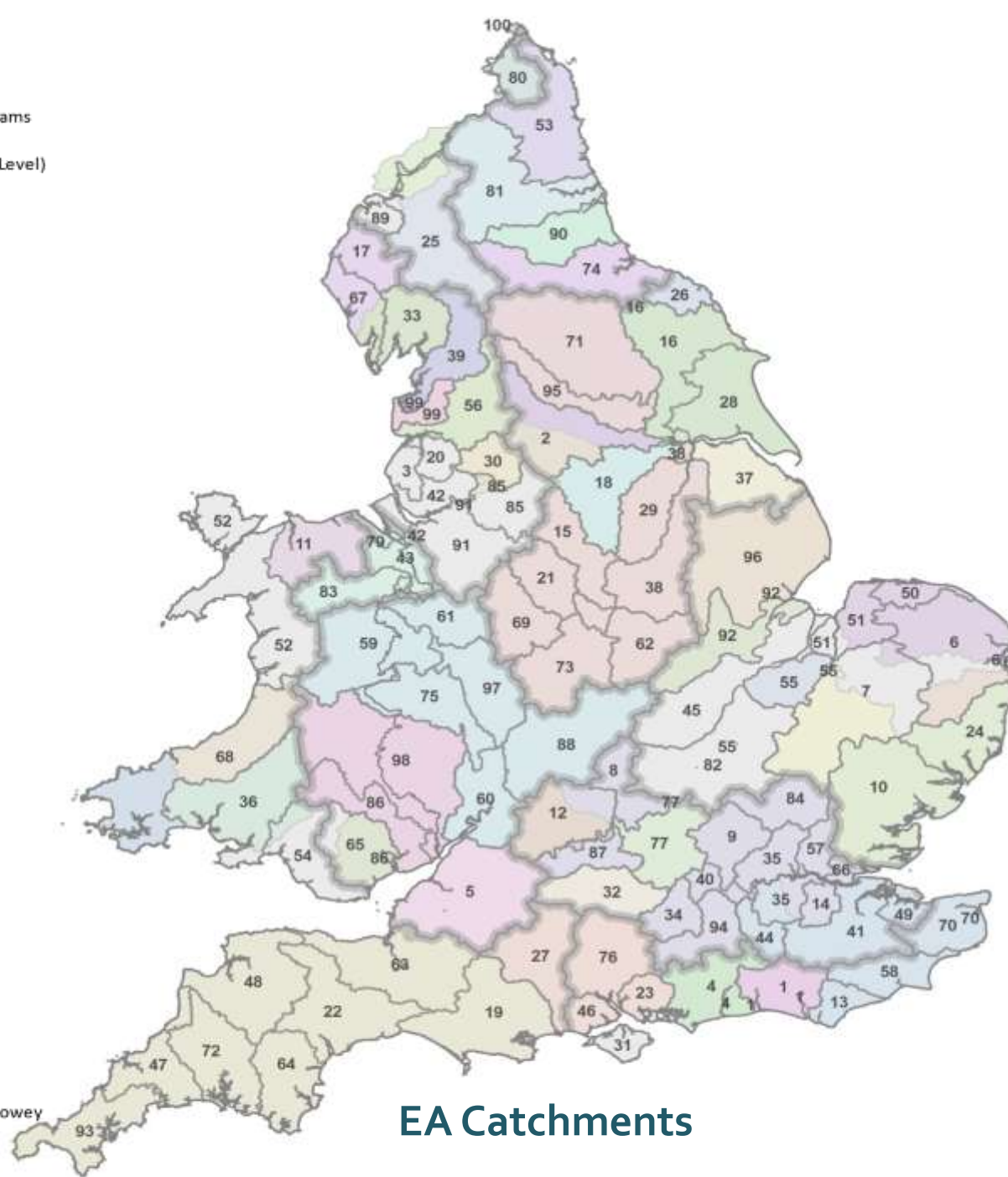


~100 De-centralised
partnerships

~70% have rivers trust
host or co-host role

www.catchmentbasedapproach.org

- 1 Adur & Ouse
- 2 Aire and Calder
- 3 Alt/Crossens
- 4 Arun & Western Streams
- 5 Bristol Avon & North Somerset Streams
- 6 Broadland Rivers
- 7 Cam and Ely Ouse (including South Level)
- 8 Cherwell
- 9 Colne
- 10 Combined Essex
- 11 Conwy and Clwyd
- 12 Cotswolds
- 13 Cuckmere & Pevensy Levels
- 14 Darent
- 15 Derbyshire Derwent
- 16 Derwent (Humber)
- 17 Derwent (NW)
- 18 Don and Rother
- 19 Dorset
- 20 Douglas
- 21 Dove
- 22 East Devon
- 23 East Hampshire
- 24 East Suffolk
- 25 Eden and Esk
- 26 Esk and Coast
- 27 Hampshire Avon
- 28 Hull and East Riding
- 29 Idle & Torne
- 30 Irwell
- 31 Isle of Wight
- 32 Kennet and Pang
- 33 Kent/Leven
- 34 Loddon
- 35 London
- 36 Loughor to Taf
- 37 Louth Grimsby and Ancholme
- 38 Lower Trent & Erewash
- 39 Lune
- 40 Maidenhead to Sunbury
- 41 Medway
- 42 Mersey Estuary
- 43 Middle Dee
- 44 Mole
- 45 Nene
- 46 New Forest
- 47 North Cornwall, Seaton, Looe and Fowey
- 48 North Devon
- 49 North Kent
- 50 North Norfolk



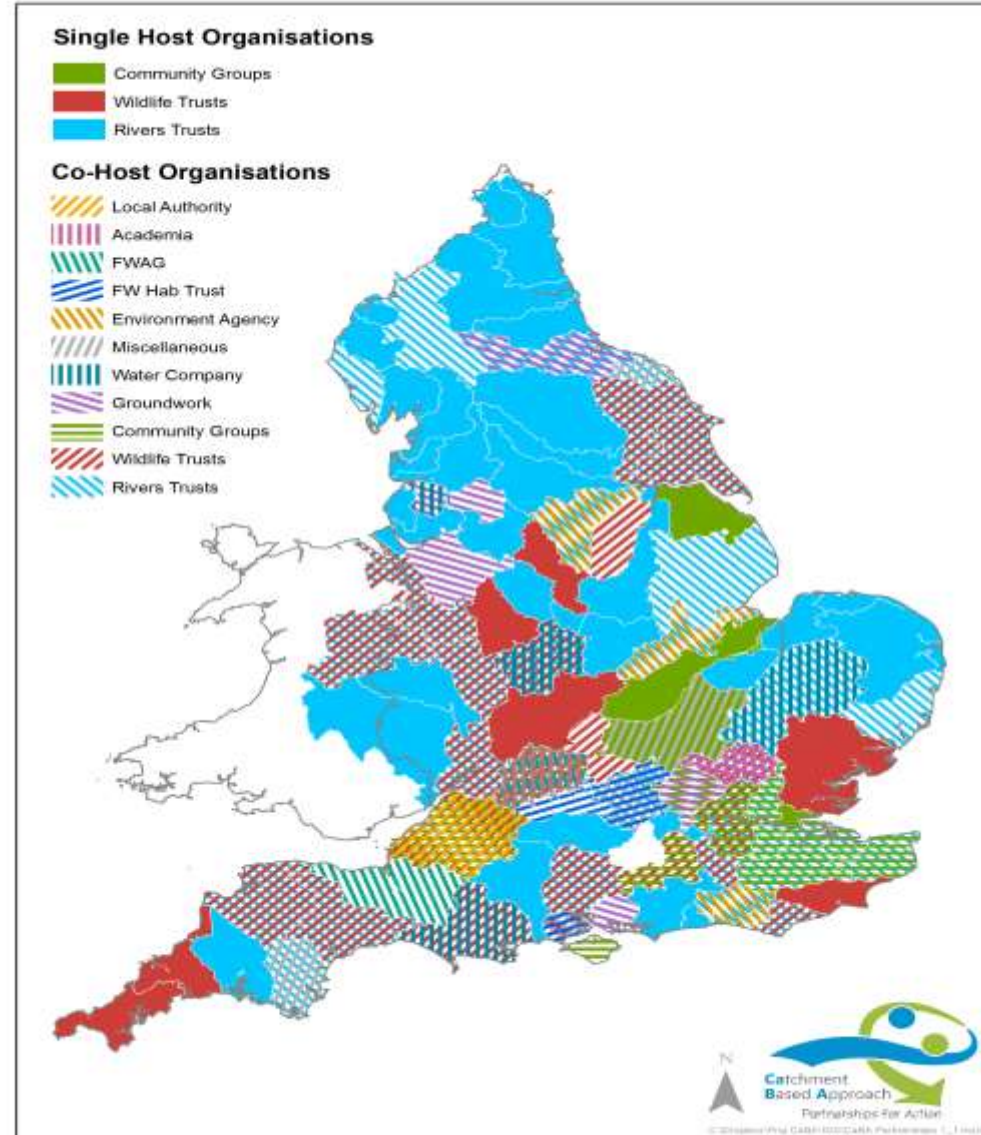
- 51 North West Norfolk
- 52 North West Wales
- 53 Northumberland Rivers
- 54 Ogmore to Tawe
- 55 Old Bedford including the Middle Level
- 56 Ribble
- 57 Roding, Beam & Ingrebourne
- 58 Rother
- 59 Severn Uplands
- 60 Severn Vale
- 61 Shropshire Middle Severn
- 62 Soar
- 63 South & West Somerset
- 64 South Devon
- 65 South East Valleys
- 66 South Essex
- 67 South West Lakes
- 68 South West Wales
- 69 Staffordshire Trent Valley
- 70 Stour
- 71 Swale, Ure, Nidd & Upper Ouse
- 72 Tamar
- 73 Tame Anker and Mease
- 74 Tees
- 75 Teme
- 76 Test & Itchen
- 77 Thame and South Chilterns
- 78 Thames (tidal)
- 79 Tidal Dee
- 80 Till
- 81 Tyne
- 82 Upper and Bedford Ouse
- 83 Upper Dee
- 84 Upper Lee
- 85 Upper Mersey
- 86 Usk
- 87 Vale of White Horse
- 88 Warwickshire Avon
- 89 Waver_Wampool
- 90 Wear
- 91 Weaver/Goway
- 92 Welland
- 93 West Cornwall and the Fal
- 94 Wey
- 95 Wharfe and Lower Ouse
- 96 Witham
- 97 Worcestershire Middle Severn
- 98 Wye
- 99 Wyre
- 100 TWEED

EA Catchments

CaBA Partnerships



CaBA Catchment Partnerships by Management Catchment, Oct 2013



CaBA National Support Group



- Angling Trust
- Catchment Sensitive Farming
- Defra
- EA
- Forestry Commission
- Freshwater Habitats Trust
- Groundwork Trust
- National Trust
- NE
- RSPB
- Salmon & Trout Conservation Trust
- The Rivers Trust
- The Wildlife Trusts
- Wildfowl and Wetland Trust
- WWF
- Water UK

•*Joint Secretariat – provided by:
The Rivers Trust &
The Wildlife Trusts*

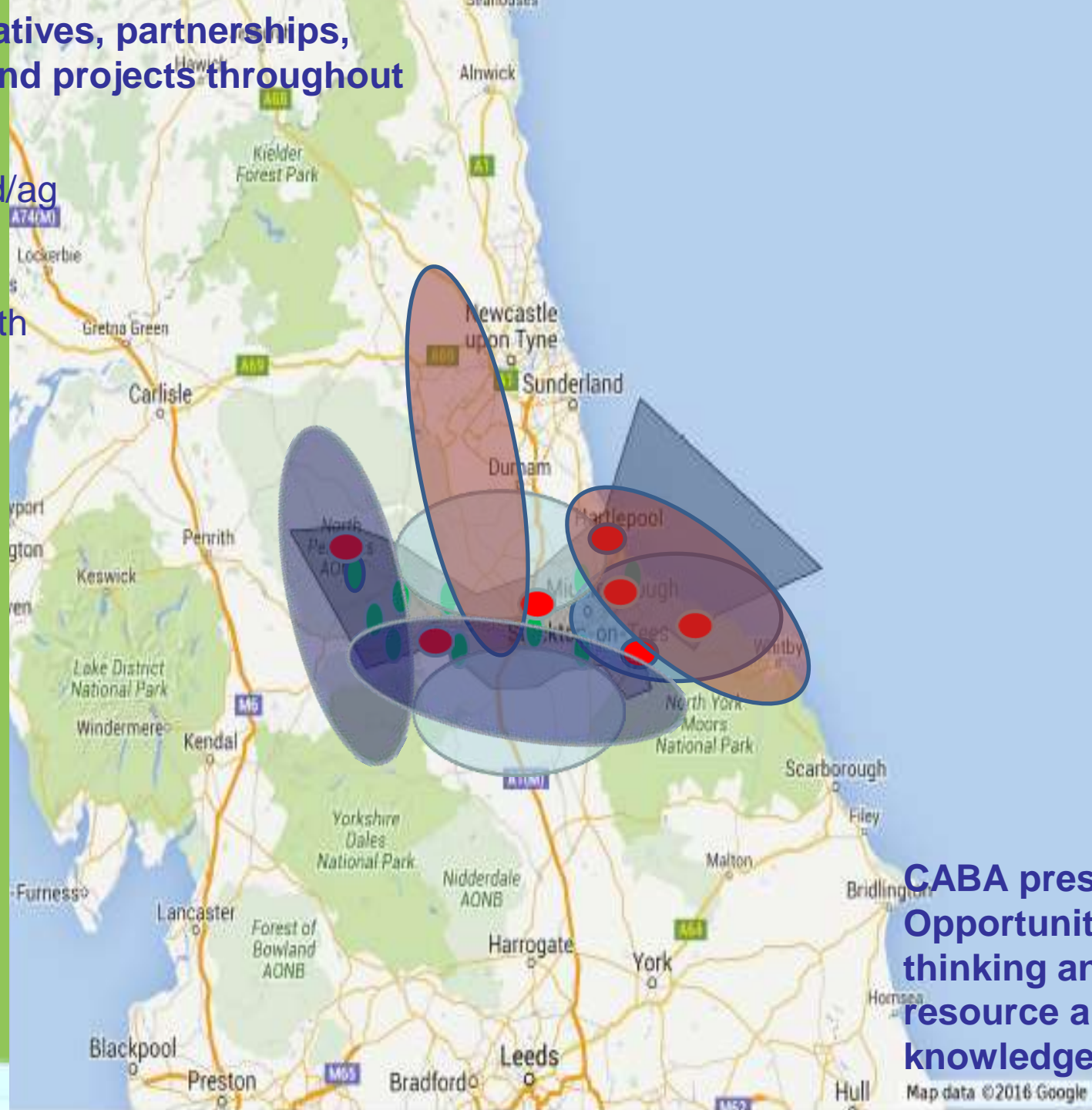


Your Tees Catchment Partnership



Multiple initiatives, partnerships, local plans and projects throughout catchment

-  = woodland/ag initiative
-  = HLF
-  = local auth
-  = LNP



**CABA presents
Opportunity to join
thinking and share
resource and
knowledge**

Cocker Beck Catchment Project

Working at a catchment scale has multiple benefits...

But first we need to find out what the problems are/perceived to be.





**Making a sound
business case for
water and soil
management =
changes in practice**





**Farm
improvements =
reduced loss
and risk and
improved water
quality**





Community Engagement = increased awareness/interest





Training community to gather evidence and understand = empowerment and ownership.





Improving habitat in urban becks uncovering and dealing with issues making beck safer and improving water quality



Promoted Wider volunteer initiative



Jul 2015 – April 2016
Darlington
243 street champions
6453 hours volunteered
8 tons litter picked
3.2 from becks

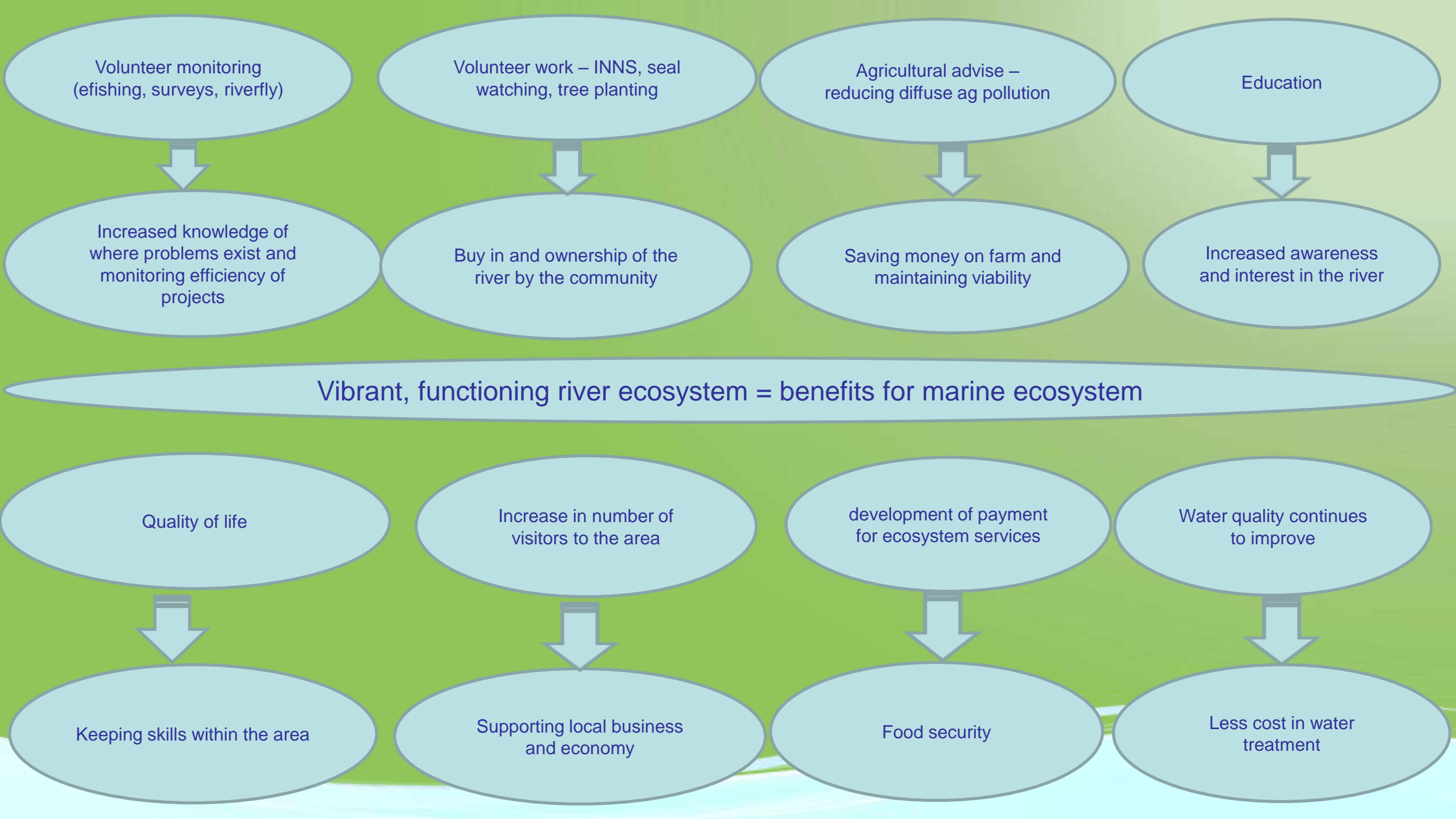


All working to stop this.....



.....getting here.





Volunteer monitoring
(efishing, surveys, riverfly)

Volunteer work – INNS, seal
watching, tree planting

Agricultural advise –
reducing diffuse ag pollution

Education

Increased knowledge of
where problems exist and
monitoring efficiency of
projects

Buy in and ownership of the
river by the community

Saving money on farm and
maintaining viability

Increased awareness
and interest in the river

Vibrant, functioning river ecosystem = benefits for marine ecosystem

Quality of life

Increase in number of
visitors to the area

development of payment
for ecosystem services

Water quality continues
to improve

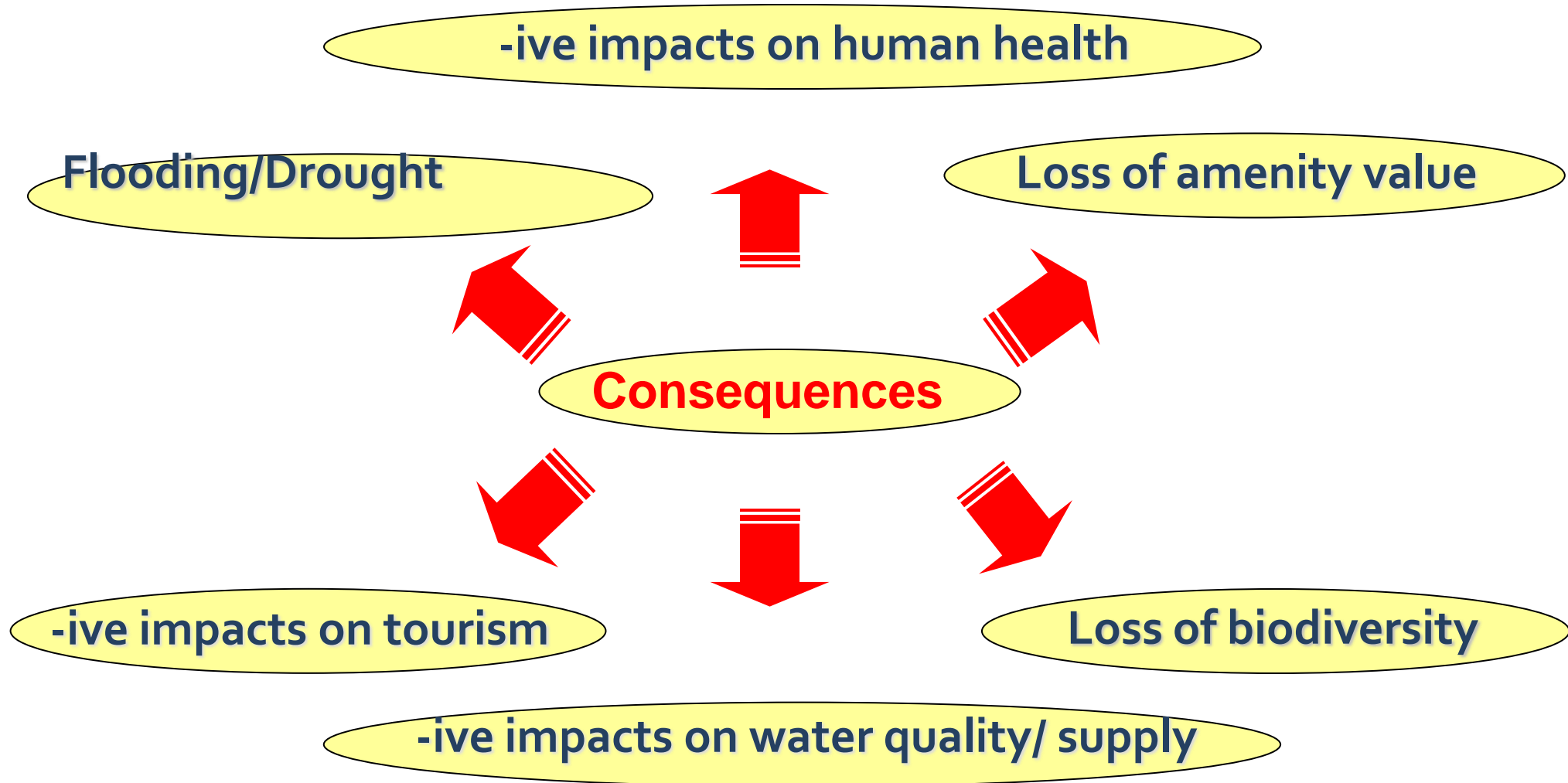
Keeping skills within the area

Supporting local business
and economy

Food security

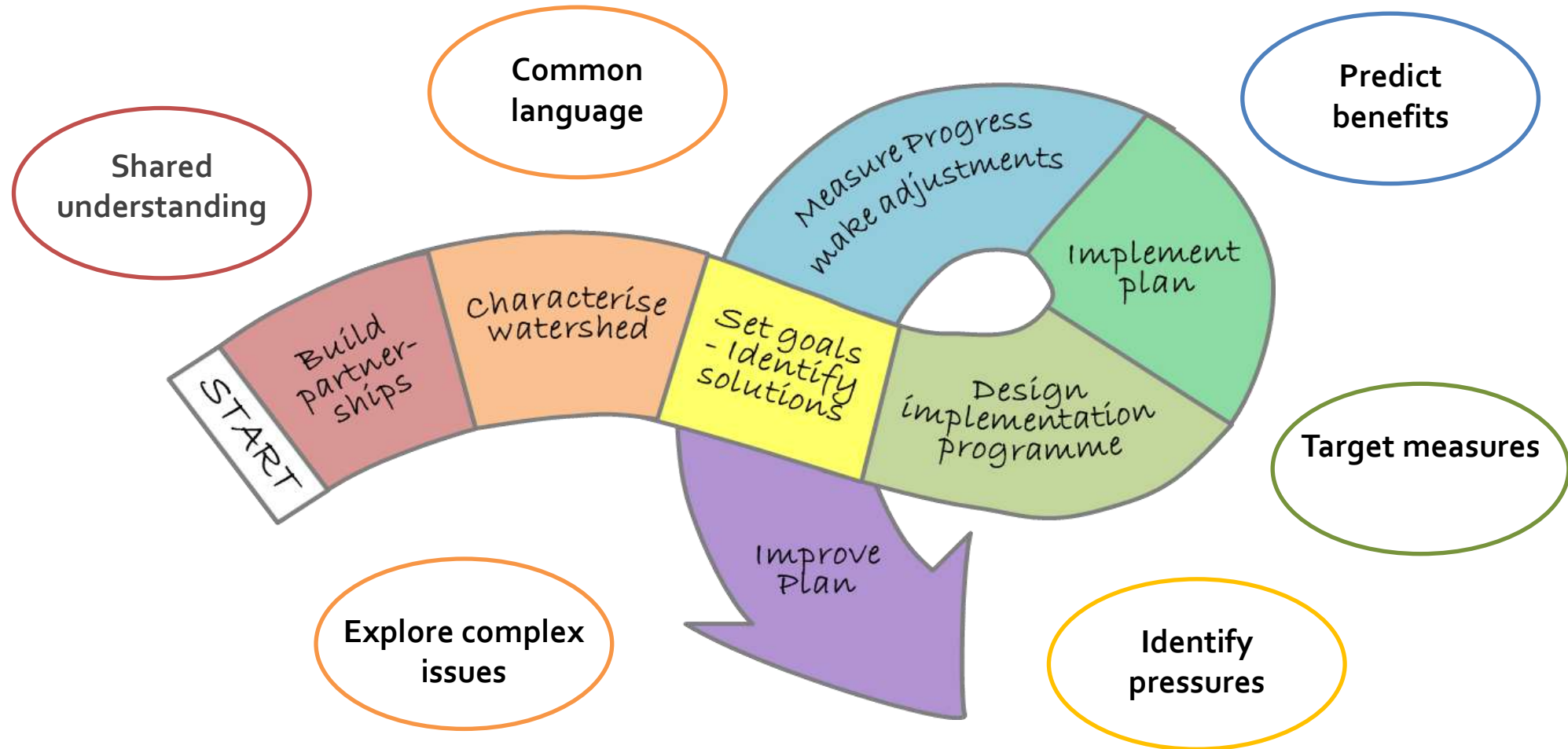
Less cost in water
treatment

Ecosystem failure means...



Data & evidence in catchment planning

Consideration of data & evidence is vital throughout stakeholder-led catchment planning - *it enables and facilitates the entire process*



Ecosystem services mapping



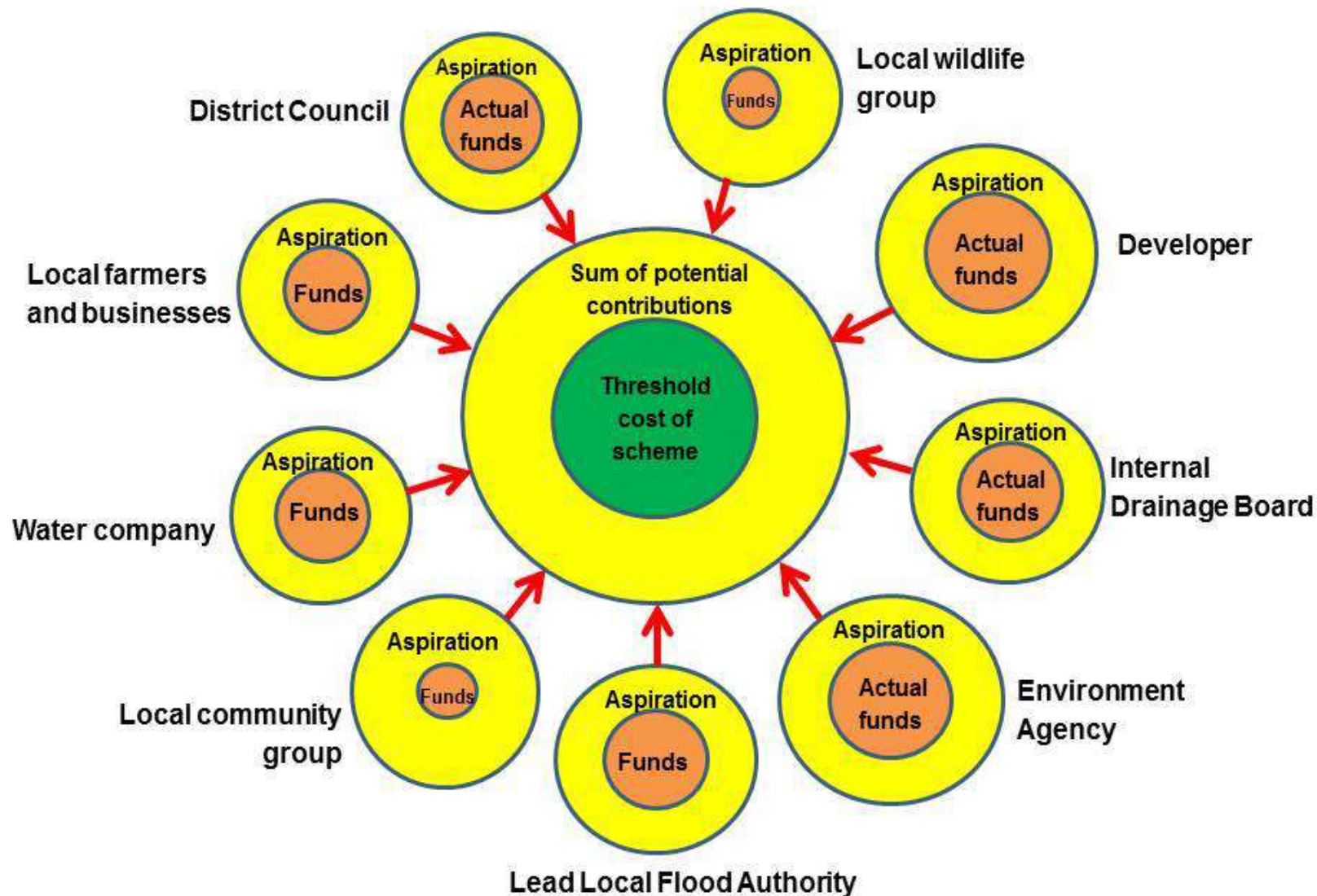
We have developed a series of simple models to map land...

- Critical for the delivery of multiple ecosystem services
- Where these areas conflict with agricultural practice
- Where **sustainable intensive agriculture** could occur

Designed to...

- Initiate discussion between stakeholders
- Provide evidence to engage with potential funders
- Assess the scale of the challenge & the potential for success

Synergy - The Power of Partnership



CaBA's TraC Waters Working Group

- Why has CaBA to date not driven action to improve failing water bodies in Transitional and Coastal Waters to the same degree as in fluvial locations?
- Task and finish group set up to address this
- Comprises local players, to get to heart of the matter
- Joint exercise with representatives of Coastal Partnerships
- Group focusing on:
 - driving much better collation, sharing and interpretation of key data relating to coastal waters
 - producing guidance to the Catchment and Coastal Partnership Networks
- Input from members of shellfish sector would be valued



Partnership working & opportunities



- Estuarial & inshore fisheries science & management
- Ecosystem Services Mapping
- Reduction of algal blooms and eutrophication
- Pollution & misconnections
- Bathing water quality & Shellfish water quality
- Sedimentation
- FCRM
- Invasive Non Native Species (INNS)



In conclusion

- Joint delivery of environmental measures, using the capabilities of and funding of external players, is definitely here to stay
- Surely, shellfish sector **MUST** be a beneficiary if we step up progress on diffuse pollution under CaBA and can mobilise CaBA's effect in TraC waters?
- Improving shellfish water quality could be a key measure of success for CaBA
- Keen to make contacts with anyone interested in linking in to Partnerships' efforts to drive improvements at the coast

The Catchment Based Approach (CaBA): Getting the Best from the Water Environment

Chris Ryder
Programme Executive
CaBA National Support Group

www.catchmentbasedapproach.org

Ben Lamb
Trust Manager
Tees Rivers Trust

www.teesriverstrust.org

SAGB Conference
Fishmongers' Hall
24-25 May 2016

